

Ø 16–110 mm

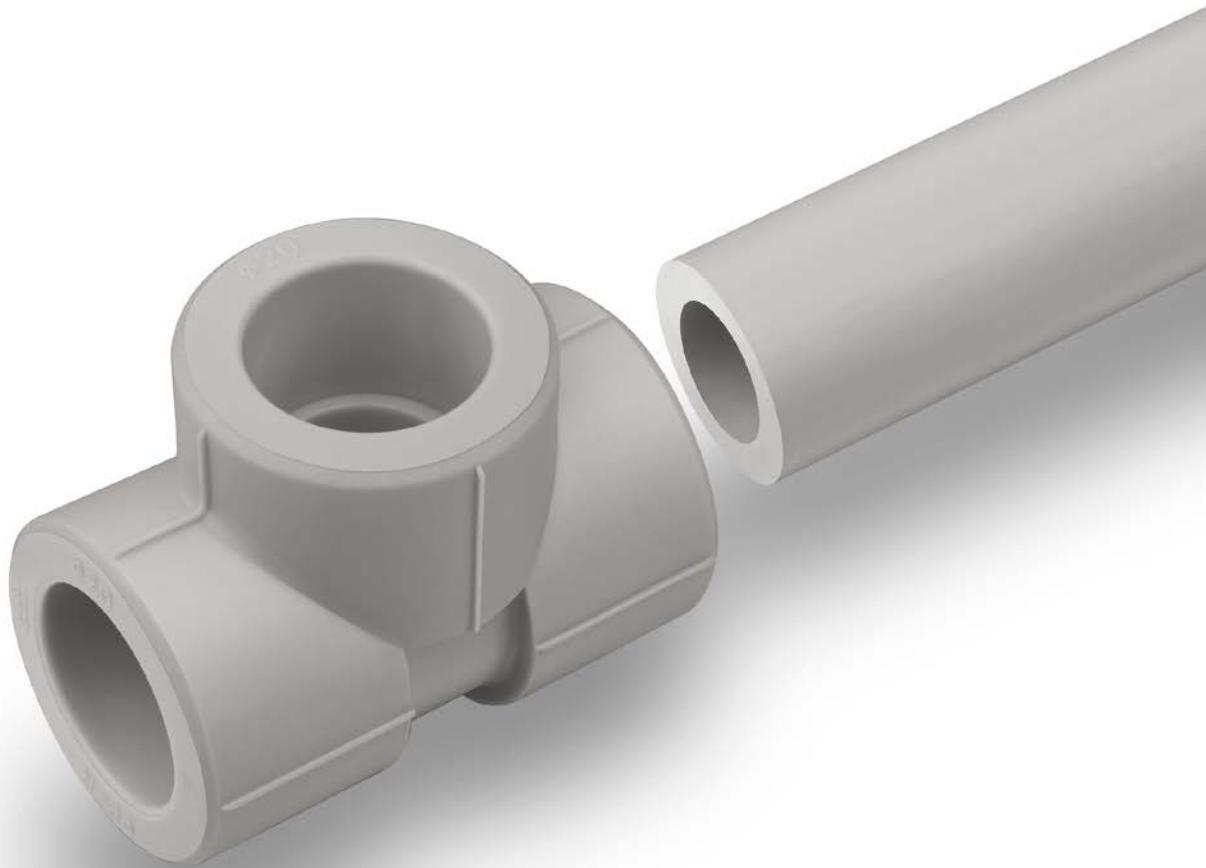


SYSTEM **KAN-therm**

PP

High quality  
for reasonable price

EN 02/2019-1,2



TECHNOLOGY OF SUCCESS



ISO 9001

# System KAN-therm PP - assortment

## pipe PN10 (S5/SDR11)

GROUP: L

Size	New code	*	Code	Packing	UM	Price EUR/UM
20×1,9	1229202002	***	04000120	4/200	m	
25×2,3	1229202004	***	04000125	4/160	m	
32×2,9	1229202006	***	04000132	4/80	m	
40×3,7	1229202009	***	04000140	4/60	m	
50×4,6	1229202010	***	04000150	4/40	m	
63×5,8	1229202012	***	04000163	4/24	m	
75×6,8	1229202014	***	04000175	4/20	m	
90×8,2	1229202016	***	04000190	4/12	m	
110×10,0	1229202000	***	04000111	4/8	m	



## pipe PN16 (S3,2/SDR7,4)

GROUP: L

Size	New code	*	Code	Packing	UM	Price EUR/UM
20×2,8	1229203001		04000220	4/160	m	
25×3,5	1229203003		04000225	4/100	m	
32×4,4	1229203005		04000232	4/60	m	
40×5,5	1229203008		04000240	4/40	m	
50×6,9	1229203010		04000250	4/28	m	
63×8,6	1229203012		04000263	4/16	m	
75×10,3	1229203014		04000275	4/12	m	
90×12,3	1229203016		04000290	4/8	m	
110×15,1	1229203000		04000211	4/4	m	



## pipe PN20 (S2,5/SDR6)

GROUP: L

Size	New code	*	Code	Packing	UM	Price EUR/UM
16×2,7	1229206031		04000316	4/200	m	
20×3,4	1229206033		04000320	4/160	m	
25×4,2	1229206035		04000325	4/100	m	
32×5,4	1229206037		04000332	4/60	m	
40×6,7	1229206039		04000340	4/40	m	
50×8,3	1229206041		04000350	4/28	m	
63×10,5	1229206043		04000363	4/16	m	
75×12,5	1229206045		04000375	4/12	m	
90×15,0	1229206047		04000390	4/8	m	
110×18,3	1229206029		04000311	4/4	m	



## pipe PN16 (S3,2/SDR7,4) Stabi Al

GROUP: M

Size	New code	*	Code	Packing	UM	Price EUR/UM
20×2,8	1229206003	***	03800020	4/100	m	
25×3,5	1229206007	***	03800025	4/80	m	
32×4,4	1229206011	***	03800032	4/40	m	
40×5,5	1229206015	***	03800040	4/28	m	
50×6,9	1229206019	***	03800050	4/20	m	
63×8,6	1229206022	***	03800063	4/12	m	
75×10,3	1229206025	***	03800075	4/8	m	



\* on request (delivery time up to 4 weeks)

\*\* availability by individual arrangements

\*\*\* till stock ends

pipe PN20 (S2,5/SDR6) Stabi Al

GROUP: M

Size	New code	*	Code	Packing	UM	Price EUR/UM
16×2,7	1229205003		03900016	4/160	m	
20×3,4	1229205005		03900020	4/100	m	
25×4,2	1229205007		03900025	4/80	m	
32×5,4	1229205009		03900032	4/40	m	
40×6,7	1229205012		03900040	4/28	m	
50×8,3	1229205015		03900050	4/20	m	
63×10,5	1229205018		03900063	4/12	m	
75×12,5	1229205021		03900075	4/8	m	
90×15,0	1229205000		03900090	4/8	m	
110×18,3	1229205002		03900011	4/4	m	



pipe PN16 (S3,2/SDR7,4) Glass

GROUP: M

Size	New code	*	Code	Packing	UM	Price EUR/UM
20×2,8	1229204002		03810020	4/100	m	
25×3,5	1229204003		03810025	4/80	m	
32×4,4	1229204004		03810032	4/40	m	
40×5,5	1229204005		03810040	4/28	m	
50×6,9	1229204006		03810050	4/20	m	
63×8,6	1229204007		03810063	4/12	m	
75×10,3	1229204008		03810075	4/8	m	
90×12,3	1229204009		03810090	4/8	m	
110×15,1	1229204000		03810011	4/4	m	



pipe PN20 (S2,5/SDR6) Glass

GROUP: M

Size	New code	*	Code	Packing	UM	Price EUR/UM
20×3,4	1229205025		03910020	4/100	m	
25×4,2	1229205026		03910025	4/80	m	
32×5,4	1229205027		03910032	4/40	m	
40×6,7	1229205011		03910040	4/28	m	
50×8,3	1229205014		03910050	4/20	m	
63×10,5	1229205017		03910063	4/12	m	
75×12,5	1229205020		03910075	4/8	m	
90×15,0	1229205024		03910090	4/8	m	
110×18,3	1229205001		03910011	4/4	m	



saddle coupler PP x Push

GROUP: N

Size	New code	*	Code	Packing	UM	Price EUR/UM
63 / 18×2	1209238010		04118263	20/160	pc	
75 / 18×2	1209238011		04118275	20/160	pc	
90 / 18×2	1209238012		04118290	20/160	pc	
110 / 18×2	1209238009		04118211	20/160	pc	



\* on request (delivery time up to 4 weeks)

\*\* availability by individual arrangements

\*\*\* till stock ends

## saddle coupler PP GW

GROUP: N

Size	New code	*	Code	Packing	UM	Price EUR/UM
40×GW½"	1209238022			20/160	pc	
50×GW½"	1209238023			20/160	pc	
63×GW½"	1209230007		04118163	20/160	pc	
75×GW½"	1209230009		04118175	20/160	pc	
90×GW½"	1209230011		04118190	20/160	pc	
110×GW½"	1209230003		04118111	20/160	pc	



## crossover

GROUP: N

Size	New code	*	Code	Packing	UM	Price EUR/UM
16	1209036000		04101016	20	pc	
20	1209036002		04101020	20	pc	
25	1209036003		04101025	15	pc	
32	1209036004		04101032	10	pc	

Crossover's diameter Ø150, length 370 mm.



## crossover

GROUP: N

Size	New code	*	Code	Packing	UM	Price EUR/UM
16	1209269000		04102016	200	pc	
20	1209269001		04102020	150	pc	
25	1209269002		04102025	100	pc	
32	1209269003		04102032	60	pc	



## straight coupling

GROUP: N

Size	New code	*	Code	Packing	UM	Price EUR/UM
16	1209245001		04103016	80/1360	pc	
20	1209245002		04103020	100/700	pc	
25	1209245003		04103025	50/550	pc	
32	1209245004		04103032	40/280	pc	
40	1209245005		04103040	30/180	pc	
50	1209245006		04103050	110	pc	
63	1209245007		04103063	60	pc	
75	1209245008		04103075	45	pc	
90	1209245009		04103090	24	pc	
110	1209245000		04103011	16	pc	



\* on request (delivery time up to 4 weeks)

\*\* availability by individual arrangements

\*\*\* till stock ends

## reducer

GROUP: N

Size	New code	*	Code	Packing	UM	Price EUR/UM
20×16	1209220004		04108020	100/1200	pc	
25×16	1209220005		04108025	50/1100	pc	
25×20	1209220006		04108026	100/900	pc	
32×20	1209220007		04108032	80/640	pc	
32×25	1209220008		04108033	80/560	pc	
40×20	1209220009		04108040	50/400	pc	
40×25	1209220010		04108041	50/350	pc	
40×32	1209220011		04108042	50/300	pc	
50×32	1209220000		04108050	30/180	pc	
50×40	1209220012		04108051	30/150	pc	
63×32	1209220013		04108063	100	pc	
63×40	1209220014		04108064	100	pc	
63×50	1209220015		04108065	100	pc	
75×50	1209220016		04108075	80	pc	
75×63	1209220017		04108076	50	pc	
90×50	1209220018		04108090	48	pc	
90×63	1209220019		04108091	45	pc	
90×75	1209220020		04108092	45	pc	
110×63	1209220001		04108012	27	pc	
11075	1209220002		04108013	27	pc	
110×90	1209220003		04108011	27	pc	

**Caution:**

Reducers are intended for direct welding into the fitting socket.



## straight female connector

GROUP: N

Size	New code	*	Code	Packing	UM	Price EUR/UM
16×½"	1209050002		04103116	20/200	pc	
20×½"	1209050003		04103120	20/180	pc	
20×¾"	1209050004		04103121	30/150	pc	
25×½"	1209050005		04103125	20/160	pc	
25×¾"	1209050006		04103126	30/150	pc	
N 25×1"	1209245020			100	pc	
32×¾"	1209050008		04103131	100	pc	
32×1"	1209050007		04103132	100	pc	
40×1¼"	1209050009		04103140	60	pc	
50×1½"	1209050011		04103150	35	pc	
63×2"	1209050012		04103163	18	pc	
75×2½"	1209050013		04103175	12	pc.	
90×3"	1209050014		04103190	8	pc	

**Caution:**

Elements with 1" thread and bigger are equipped with polygon surface for spanner placing.



## straight male connector

GROUP: N

Size	New code	*	Code	Packing	UM	Price EUR/UM
16×1/2"	1209051003		04103216	20/160	pc	
20×1/2"	1209051004		04103220	20/160	pc	
20×3/4"	1209051005		04103221	30/120	pc	
25×1/2"	1209051006		04103225	20/140	pc	
25×3/4"	1209051007		04103226	30/120	pc	
N 25×1"	1209245018			80	pc	
32×3/4"	1209051009		04103231	80	pc	
32×1"	1209051008		04103232	80	pc	
N 32×1 1/4"	1209245019			50	pc	
40×1 1/4"	1209051010		04103240	50	pc	
50×1 1/2"	1209051012		04103250	36	pc	
63×2"	1209051013		04103263	18	pc	
75×2 1/2"	1209051014		04103275	10	pc	
90×3"	1209051015		04103290	6	pc	

**Caution:**

Elements with 1" thread and bigger are equipped with polygon surface for spanner placing.



## elbow 90°

GROUP: N

Size	New code	*	Code	Packing	UM	Price EUR/UM
16	1209068010		04104016	50/900	pc	
20	1209068011		04104020	100/500	pc	
25	1209068012		04104025	50/350	pc	
32	1209068013		04104032	20/200	pc	
40	1209068014		04104040	20/120	pc	
50	1209068015		04104050	60	pc	
63	1209068016		04104063	32	pc	
75	1209068017		04104075	20	pc	
90	1209068018		04104090	12	pc	
110	1209068009		04104011	8	pc	



## nipple elbow 90°

GROUP: N

Size	New code	*	Code	Packing	UM	Price EUR/UM
16	1209068022		04104216	50/1000	pc	
20	1209068023		04104220	100/600	pc	
25	1209068024		04104225	50/400	pc	
32	1209068025		04104232	50/200	pc	



## elbow 45°

GROUP: N

Size	New code	*	Code	Packing	UM	Price EUR/UM
16	1209068000		04104316	50/950	pc	
20	1209068001		04104320	100/700	pc	
25	1209068002		04104325	50/400	pc	
32	1209068003		04104332	40/200	pc	
40	1209068004		04104340	20/140	pc	
50	1209068005		04104350	80	pc	
63	1209068006		04104363	40	pc	
75	1209068007		04104375	25	pc	
90	1209068008		04104390	14	pc	



\* on request (delivery time up to 4 weeks)

\*\* availability by individual arrangements

\*\*\* till stock ends

### nipple elbow 45°

GROUP: N

Size	New code	*	Code	Packing	UM	Price EUR/UM
16	1209068019		04104116	50/1050	pc	
20	1209068020		04104120	100/700	pc	
25	1209068021		04104125	50/450	pc	



### wallplate elbow

GROUP: N

Size	New code	*	Code	Packing	UM	Price EUR/UM
16 × 1/2"	1209069006		04104416	20/140	pc	
20 × 1/2"	1209069007		04104420	20/140	pc	
25 × 1/2"	1209069008		04104425	20/120	pc	



### male elbow 90°

GROUP: N

Size	New code	*	Code	Packing	UM	Price EUR/UM
16 × 1/2"	1209070000		04104516	20/140	pc	
20 × 1/2"	1209070001		04104520	30/90	pc	
20 × 3/4"	1209070002		04104521	30/90	pc	
25 × 1/2"	1209070003		04104525	20/120	pc	
25 × 3/4"	1209070004		04104526	30/90	pc	
32 × 3/4"	1209070005		04104532	30/60	pc	



### male elbow 90°

GROUP: N

Size	New code	*	Code	Packing	UM	Price EUR/UM
32 × 1"	1209070006		04104534	50	pc	

**Caution:**  
Element is equipped with polygon surface for spanner placing.



### elbow with female thread

GROUP: N

Size	New code	*	Code	Packing	UM	Price EUR/UM
16 × 1/2"	1209069000		04104616	20/180	pc	
20 × 1/2"	1209069001		04104620	20/140	pc	
20 × 3/4"	1209069002		04104621	30/120	pc	
25 × 1/2"	1209069003		04104625	20/120	pc	
25 × 3/4"	1209069004		04104626	30/120	pc	
32 × 3/4"	1209069005		04104632	30/90	pc	



### elbow with female thread

GROUP: N

Size	New code	*	Code	Packing	UM	Price EUR/UM
32 × 1"	1209069009		04104634	50	pc	

**Caution:**  
Element is equipped with polygon surface for spanner placing.



## reducing tee

GROUP: N

Size	New code	*	Code	Packing	UM	Price EUR/UM
20×16×20	1209257011		04105020	20/380	pc	
25×16×25	1209257012		04105025	20/260	pc	
25×20×25	1209257013		04105026	20/240	pc	
32×16×32	1209257016		04105032	20/140	pc	
32×20×32	1209257017		04105033	20/140	pc	
32×25×32	1209257018		04105034	20/140	pc	
40×20×40	1209257019		04105040	20/80	pc	
40×25×40	1209257020		04105041	15/90	pc	
40×32×40	1209257021		04105042	15/90	pc	
50×20×50	1209257022		04105050	60	pc	
50×25×50	1209257023		04105051	65	pc	
50×32×50	1209257024		04105052	60	pc	
50×40×50	1209257025		04105053	50	pc	
63×32×63	1209257026		04105063	30	pc	
63×40×63	1209257027		04105064	22	pc	
63×50×63	1209257028		04105065	22	pc	
75×40×75	1209257029		04105075	17	pc	
90×50×90	1209257030		04105090	12	pc	
90×63×90	1209257031		04105091	10	pc	
90×75×90	1209257032		04105092	12	pc	



## tee

GROUP: N

Size	New code	*	Code	Packing	UM	Price EUR/UM
16	1209257001		04105116	40/640	pc	
20	1209257002		04105120	80/400	pc	
25	1209257003		04105125	20/240	pc	
32	1209257004		04105132	20/140	pc	
40	1209257005		04105140	15/75	pc	
50	1209257006		04105150	50	pc	
63	1209257007		04105163	24	pc	
75	1209257008		04105175	15	pc	
90	1209257009		04105190	10	pc	
110	1209257000		04105111	8	pc	



## corner tee

GROUP: N

Size	New code	*	Code	Packing	UM	Price EUR/UM
20	1209257010		04105416	40/360	pc	



## four way fitting

GROUP: N

Size	New code	*	Code	Packing	UM	Price EUR/UM
16	1209057000		04106016	80/480	pc	
20	1209057001		04106020	40/320	pc	



\* on request (delivery time up to 4 weeks)

\*\* availability by individual arrangements

\*\*\* till stock ends



## tee with male thread

GROUP: N

Size	New code	*	Code	Packing	UM	Price EUR/UM
20×½"	1209259000		04105316	20/120	pc	



## tee with female thread

GROUP: N

Size	New code	*	Code	Packing	UM	Price EUR/UM
16×½"×16	1209258000		04105216	20/140	pc	
20×½"×20	1209258002		04105220	20/120	pc	
20×¾"×20	1209258003		04105221	30/90	pc	
25×½"×25	1209258004		04105225	20/180	pc	
25×¾"×25	1209258005		04105226	30/180	pc	
32×¾"×32	1209258006		04105232	15/60	pc	



## tee with female thread

GROUP: N

Size	New code	*	Code	Packing	UM	Price EUR/UM
32×1"×32	1209258007		04105233	15/60	pc	

## Caution:

Element is equipped with polygon surface for spanner placing.



## straight union with gasket

GROUP: N

Size	New code	*	Code	Packing	UM	Price EUR/UM
20×¾"	1209065001		04107020	20/200	pc	



## half union with flat gasket

GROUP: N

Size	New code	*	Code	Packing	UM	Price EUR/UM
16×¾"	1209105000		04107116	50/300	pc	
20×¾"	1209105001		04107120	50/400	pc	
25×1"	1209105002		04107125	20/100	pc	



## half union coupling

GROUP: N

Size	New code	*	Code	Packing	UM	Price EUR/UM
N 20×½"	1209271006			20/200	pc	
N 20×¾"	1209271007			20/200	pc	
N 25×¾"	1209271008			20/200	pc	



\* on request (delivery time up to 4 weeks)

\*\* availability by individual arrangements

\*\*\* till stock ends

### union with flat gasket

GROUP: N

Size	New code	*	Code	Packing	UM	Price EUR/UM
16×½"	1209271000		04107216	20/200	pc	
20×½"	1209271001		04107220	20/200	pc	
20×¾"	1209271002		04107221	20/200	pc	
25×¾"	1209271004		04107225	20/100	pc	
25×1"	1209271003		04107226	20/100	pc	
32×1"	1209272000		04107232	20/60	pc	



### flange with flat EPDM O-Ring seal

GROUP: N

Size	New code	*	Code	Packing	UM	Price EUR/UM
40	1209091016		04109340	1/40	pc	
50	1209091017		04109350	1/30	pc	
63	1209091018		04109360	1/20	pc	
75	1209091019		04109375	1/15	pc	
90	1209091020		04109390	1/10	pc	
110	1209091015		04109310	1/6	pc	

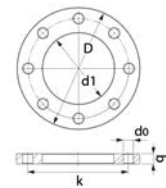


### steel flange PN16

GROUP: N

Size	New code	*	Code	Packing	UM	Price EUR/UM
40	1209091002		04109140	1	pc	
50	1209091003		04109150	1	pc	
63	1209091004		04109163	1	pc	
75	1209091005		04109175	1	pc	
90	1209091006		04109190	1	pc	
110	1209091001		04109110	1	pc	

DN	D	d1	k	d0	q	N
32	140	43	100	18	18	4
40	150	53	110	18	18	4
50	165	66	125	18	20	4
65	185	78	145	18	20	8
80	200	95	160	18	20	8
100	220	114	180	18	22	8



### stop end

GROUP: N

Size	New code	*	Code	Packing	UM	Price EUR/UM
16	1209025001		04110016	100/1000	pc	
20	1209025002		04110020	200/1000	pc	
25	1209025003		04110025	100/700	pc	
32	1209025004		04110032	50/500	pc	
40	1209025005		04110040	50/250	pc	
50	1209025006		04110050	170	pc	
63	1209025007		04110063	80	pc	
75	1209025008		04110075	50	pc	
90	1209025009		04110090	30	pc	
110	1209025000		04110011	20	pc	



\* on request (delivery time up to 4 weeks)

\*\* availability by individual arrangements

\*\*\* till stock ends

## ball valve

GROUP: N

Size	New code	*	Code	Packing	UM	Price EUR/UM
20	1209278001		04111220	10/90	pc	
25	1209278002		04111225	10/50	pc	
32	1209278014		04111232	5/25	pc	
40	1209278003		04111240	5/15	pc	
50	1209278004		04111250	2/10	pc	
63	1209278005		04111263	2/8	pc	
75	1209278006		04111275	1/5	pc	



## globe valve

GROUP: N

Size	New code	*	Code	Packing	UM	Price EUR/UM
20	1209280000		04112220	1/30	pc	
25	1209280001		04112225	1/30	pc	
32	1209280002		04112232	1/30	pc	



## concealed globe valve

GROUP: N

Size	New code	*	Code	Packing	UM	Price EUR/UM
20	1209280006		04113220	1/30	pc	
25	1209280007		04113225	1/30	pc	
32	1209280008		04113232	1/30	pc	

Valves delivered with two plugs for marking hot water (red) or cold water (blue).



## concealed globe valve with masking and mini handle

GROUP: N

Size	New code	*	Code	Packing	UM	Price EUR/UM
20	1209280003		04114220	1/30	pc	
25	1209280004		04114225	1/30	pc	
32	1209280005		04114232	1/30	pc	



## pipe clamp

GROUP: N

Size	New code	*	Code	Packing	UM	Price EUR/UM
16	1209107030		04111016	20/1000	pc	
20	1209107031		04111020	20/800	pc	
25	1209107032		04111025	20/700	pc	
32	1209107033		04111032	20/440	pc	
40	1209107034		04111040	20/300	pc	
50	1209107035		04111050	20/240	pc	
63	1209107036		04111063	20/120	pc	
75	1209107037		04111075	20/100	pc	
90	1209107038		04111090	10/60	pc	

### Caution:

Use only for uniform pipes.  
For compound pipes use clamps with rubber insert.



### single pipe clamp with rubber dumper - double-sided lock with metric thread

GROUP: A

Size	New code	*	Code	Packing	UM	Price EUR/UM
15-18	1700081025		UP-G16	100	pc	
20-23	1700081028		UP-G20	100	pc	
25-28	1700081029		UP-G25	100	pc	
32-36	1700081030		UP-G32	50	pc	
40-44	1700081031		UP-G40	50	pc	
47-52	1700081032		UP-G50	50	pc	
57-63	1700081034		UP-G63	50	pc	
75	1700081035		UP-G75	25	pc	
90	1700081036		UP-G90	25	pc	
110	1700081023		UP-G110	25	pc	

**Caution:**

Single pipe clamp with rubber dumper contains the closing screws (8x70) and extension anchor (12).



### double pipe clamp with rubber dumper - double-sided lock with metric thread

GROUP: A

Size	New code	*	Code	Packing	UM	Price EUR/UM
16	1700081019		UD-G16	50	pc	
20	1700081020		UD-G20	50	pc	
25	1700081021		UD-G25	50	pc	
32	1700081022		UD-G32	50	pc	

**Caution:**

Single pipe clamp with rubber dumper contains the closing screws (8x70) and extension anchor (12).



### plastic mounting plate

GROUP: N

Size	New code	*	Code	Packing	UM	Price EUR/UM
16-25 (150 mm spacing)	1209210000		04111000	30/150	pc	



\* on request (delivery time up to 4 weeks)

\*\* availability by individual arrangements

\*\*\* till stock ends

# Tools

## coarse file for Stabi Al pipe

GROUP: K

Size	New code	*	Code	Packing	UM	Price EUR/UM
16/20	1933267041		04212016	1	pc	
20/25	1933267043		04212020	1	pc	
25/32	1933267045		04212025	1	pc	
32/40	1933267047		04212032	1	pc	
50	1933267049		04212050	1	pc	
63	1933267051		04212063	1	pc	
75	1933267053		04212075	1	pc	
90	1933267055		04212090	1	pc	
110	1933267039		04212011	1	pc	



## coarse file blade - service element

GROUP: K

	New code	*	Code	Packing	UM	Price EUR/UM
	1933267035	*	04210000	1	pc	



## pipe cutter

GROUP: K

Size	New code	*	Code	Packing	UM	Price EUR/UM
16-40 mm	1933267029		04212200	1	pc	



## roll-cutter

GROUP: K

Size	New code	*	Code	Packing	UM	Price EUR/UM
50-100 mm	1933267032		04212201	1	pc	



## stationary PP welding machine

GROUP: K

Size, power	New code	*	Code	Packing	UM	Price EUR/UM
63-110mm, 1600W	1933267036		04212103	1	pc	

Set includes:

- Welding machine set PZ-125
- welding machine 1600W
- Tool case (for welding machine, pipe clamps and welding sockets)
- pipe clamps Ø 63
- pipe clamps Ø 75
- pipe clamps Ø 90
- pipe clamps Ø 110

**Caution:**

Set does not include welding sockets!



\* on request (delivery time up to 4 weeks)

\*\* availability by individual arrangements

\*\*\* till stock ends

## welding machine

GROUP: K

Size, power	New code	*	Code	Packing	UM	Price EUR/UM
16-50mm, 800W	1933267062		04212100	1	pc	
63-110mm, 1600W	1933267064		04212101	1	pc	

**Caution:**

Every set includes: electric welding machine, welding machine's stand, metal box, set of inserts (depending on the diameter).



## long clamping screw for welding machine PP - maintenance component - service element

GROUP: K

	New code	*	Code	Packing	UM	Price EUR/UM
	1933267037	*	04212104	1	pc	



## tool kit for saddle coupler assembly

GROUP: K

Size	New code	*	Code	Packing	UM	Price EUR/UM
N 40	1933267004		04212440	1	pc	
N 50	1933267005		04212450	1	pc	
63	1933267006		04212463	1	pc	
75	1933267007		04212475	1	pc	
90	1933267008		04212490	1	pc	
110	1933267002		04212411	1	pc	

The set includes a female and male connector and a mounting screw (hexagonal).

Sockets to saddle connector welding are not included in the welding sets (1933267062, 1933267064).



## drill for saddle connectors

GROUP: k

Size	New code	*	Code	Packing	UM	Price EUR/UM
25	1933267038		04212425	1	pc	



## welding sockets

GROUP: K

Size	New code	*	Code	Packing	UM	Price EUR/UM
16	1933267011		04212316	1	set	
20	1933267013		04212320	1	set	
25	1933267015		04212325	1	set	
32	1933267017		04212332	1	set	
40	1933267019		04212340	1	set	
50	1933267021		04212350	1	set	
63	1933267023		04212363	1	set	
75	1933267025		04212375	1	set	
90	1933267027		04212390	1	set	
110	1933267009		04212311	1	set	

**Caution:**

Welding sockets are sold in sets (pc), welding socket for the fitting and a pipe.



\* on request (delivery time up to 4 weeks)

\*\* availability by individual arrangements

\*\*\* till stock ends